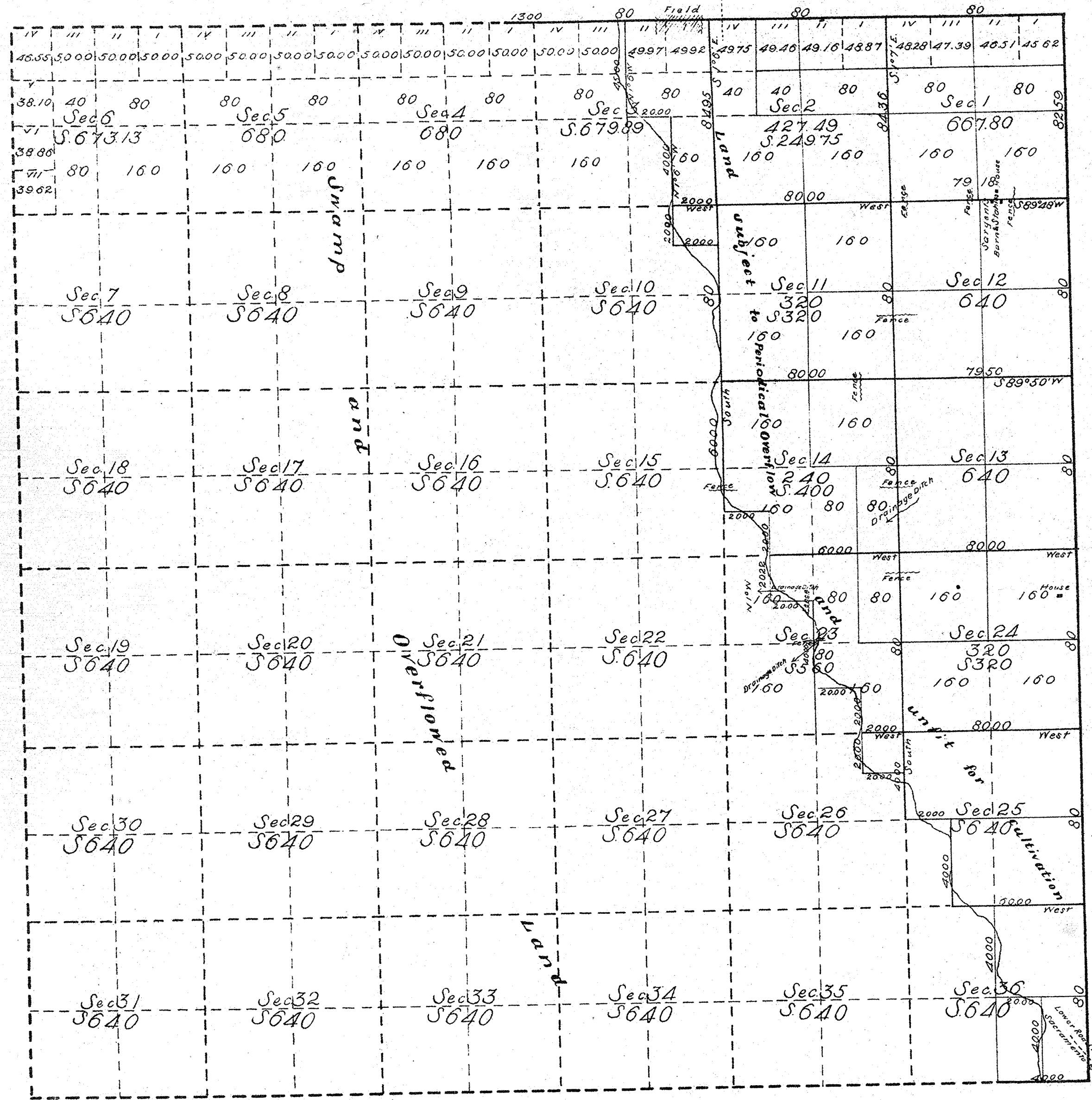


Township N. 3 North

Range N. 5 East

Mount Diablo Meridian

M. & M.
J. B. S. Jr.
G. P.



Aggregate Area of Public land 3,335.29 Acres
 Estimated area of Swamp & Overflowed land 19,922.77 "
 Aggregate 23,258.06 "

Note: The lines colored blue run by the Deputy Surveyor as the Eastern edge of Swamp and Overflowed land, are not charged in present account for the reason that he subsequently establishes said segregation line further East by reporting the land subject to Periodical Overflow worthless, unless reclaimed by a thorough surface drainage.

Subdivision lines run at a Variation of 17° 22' East

| Surveys designated | By whom Surveyed | Date of Contract | Amount of Surveys | When Surveyed |
|--------------------|------------------|----------------------------|----------------------|-------------------------------|
| Township lines | R. W. Norris | June 10 th 1853 | | 1853 |
| Section " | John Wallace | July 18 th 1867 | 15 Mts 27 Chs 99 Lks | November 2 nd 1867 |

The above Map of Township N. 3 North, Range N. 5 East of Mount Diablo Meridian is strictly conformable to the field notes of the Surveys thereof on file in this Office which have been examined and approved.
 Surveyor General's Office
 San Francisco California
 May 2nd 1868.

L. Upson
 Sur. Gen Cal.